



# ESG 數位永續發展

---

HPE 慧與科技 企業產品事業群總經理 蕭舜華 Doris

June 2023

## Start anywhere

# HPE is the edge to cloud company

## Key digital transformation trend and offering

### Hybrid Cloud 混合雲

GreenLake Cloud  
Platform, Data Services  
Cloud Platform  
Compute Ops Manager  
Hybrid Cloud advisory  
services

### AI/ML 人工智慧

HPC, Cray top500  
supercomputer  
Machine Learning  
Development  
Environment  
Infosight  
HPE Ezmeral DataFabric,  
Unified Analytics

### Data First 數據

Unified Data platform  
for data Store, Manage  
and Protect  
DSCC, Block, File, DR,  
Backup&recovery  
services, HCI, Cloud  
Physics Big Data ,  
Apollo4K platform

### ESG and 永續 Sustainability

HPE Greenlake as a  
services  
Circular economy  
IT Sustainability  
dashboard

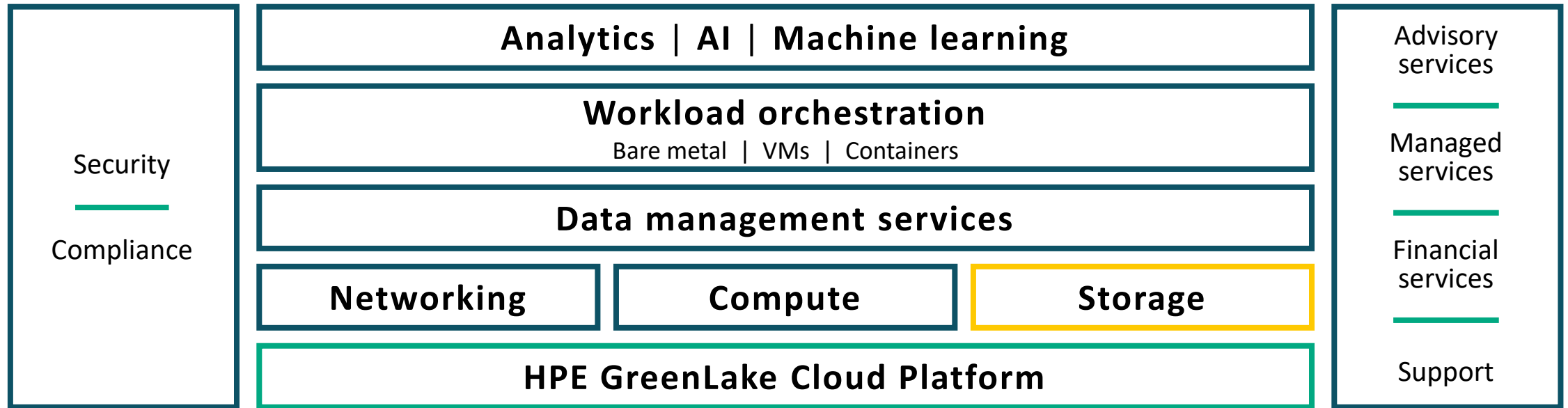




# HPE GreenLake edge-to-cloud platform

雲服務 雲管理 雲維運

## Unified cloud services experience



OPEN | Elastic | Partner enabled

HPE Inc

https://common.cloud.hpe.com/home

Switch Account

## Featured Applications

網路雲服務

### Aruba Central

Network management system designed to simplify the deployment and maintenance of Aruba wired and wireless infrastructure at scale

Get Started

[View Networking Products](#)

數據雲服務

### Data Services Cloud Console

Data Services Cloud Console

Launch

[View Storage Products](#)

運算雲服務

### Compute Ops Management

Securely manage your compute infrastructure, wherever it lives.

Launch

[View Compute Products](#)

私有雲服務

### HPE GreenLake Central

Manage your cloud services and view usage, cost, and more.

Launch

[View Cloud Products](#)

## HPE InfoSight

AI-driven Intelligence across servers, storage, virtual machines and more.

InfoSight AI 維運管理

Launch

## Quick Actions



### Invite Users

Send a sign-up link to users so you can collaborate with your team.

Send an Invite



### Assign User Access

Assign a custom role or built-in roles to your team.

Assign Roles

使用者管理



### Onboard Devices

Add and tag your compute, networking, and storage devices.

Add Devices

新增硬體



### Manage Subscriptions

Add and manage your device and service subscriptions.

Add Subscriptions

雲服務 管理APP

# HPC & AI 高效能SUPERCOMPUTING

## Purpose-built supercomputing

### HPE Cray EX supercomputers



The next frontier of supercomputing systems redesigned for HPC, AI, and converged workloads

### HPE Cray EX2500 supercomputer



### HPE Superdome Flex



Scale-up, shared memory HPC

### HPE Superdome Flex 280



## Accelerated HPC/AI

Accelerated compute platform for HPC and AI workloads

### HPE Apollo 6500 Gen10 Plus System



## Mainstream HPC/AI

Density-optimized, scale-out compute for HPC and AI workloads

### HPE Cray XD2000 System



### HPE Apollo 2000 Gen10 Plus System



### HPE ProLiant DL385 Gen10 Plus System



## Edgeline

Range of platforms and capabilities engineered for the harsh edge environment

### HPE Edgeline EL8000



Cray ClusterStor E1000 Parallel storage system purpose-engineered for HPC and AI



Integrated HPC & AI Software Portfolio including software development and acceleration environments, cluster management, data management, and system management

Everything available “as a Service” via HPE GreenLake for HPC

# HPE has taken supercomputing into the exascale era

Enabling unprecedented progress in **computational science and business**



1

**Supercomputer\***  
(more than 1 exaflops)

1

**Storage System\*\***  
(nearly 1 exabyte raw capacity)

## Clean Energy

**Faster**  
path to clean fusion power



## Material Science

**More sustainable**  
materials and designs



## Health Care

**Accelerated**  
cancer research



## Environmental

**Better protection**  
of biodiversity



June 2023 top500.org list

OLCF announces storage specifications for Frontier exascale system

# NEW AI/ML 模型開發和訓練平台

Accelerate ML data prep, model development, and training

## HPE Machine Learning Data Management Software

**Highly scalable, performant  
data and ML pipelines**

- Process petabyte-scale ML workloads up to 40% faster
- Reproduce any outcome by capturing data lineage
- Language and tooling agnostic; on-premises or in the cloud

Now available

## HPE Machine Learning Development Environment

**Enterprise, HPC, & GPT ready  
AI/ML model training at scale**

- Scale Large Language Model training across environments
- Reduce cost—mix AI and HPC workloads on shared clusters
- Accelerator choice—AMD, NVIDIA

Now available as a service via  
HPE GreenLake for HPC

## HPE Machine Learning Development System

**Turnkey AI/ML model training  
infrastructure**

- Train models from Day 1 with reduced set-up time
- Right-sized infrastructure with space to grow with models
- Track, manage, and reproduce work for AI/ML teams

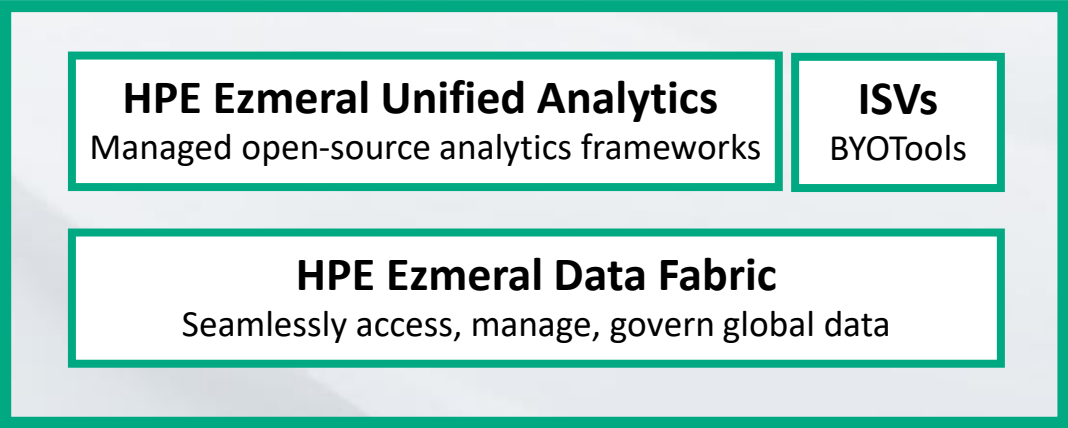
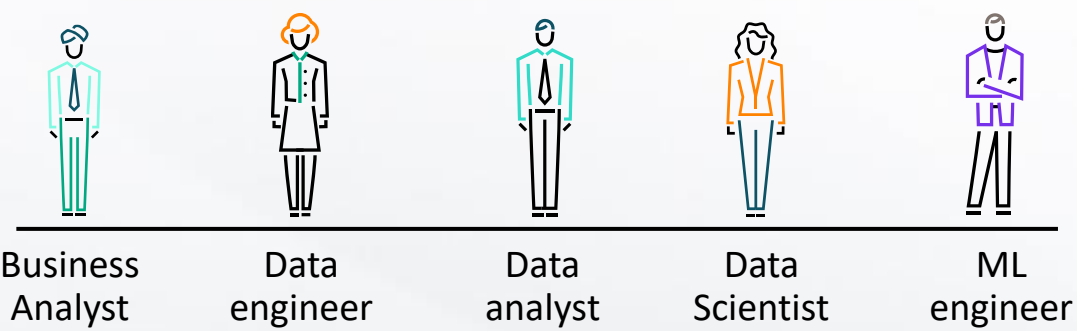
Now supporting HPC infra, AI/ML-  
optimized compute

# AI/ML 大數據分析 和智能模型開發協作平台

## HPE Ezmeral Software

A fully curated open-source  
based analytics environment for  
hybrid cloud

Develop  
Deploy  
Analyze ] everywhere



Edge ————— HPE GreenLake / On-premises / Colo ————— Public clouds

Hybrid cloud by design      Open and extensible      Consistent experience





# HPE Ezmeral Software

單一平台整合常用應用軟體和工具以 加速模型開發與模型訓練

**Common platform and user experience**

Data engineer

Data analyst

Data scientist

ML engineer

Business analyst

**Addresses full spectrum of AI and analytics**

Business edge locations

Colocation facilities and data centers

Public clouds

**Global visibility and control**

## 智慧工廠應用案例

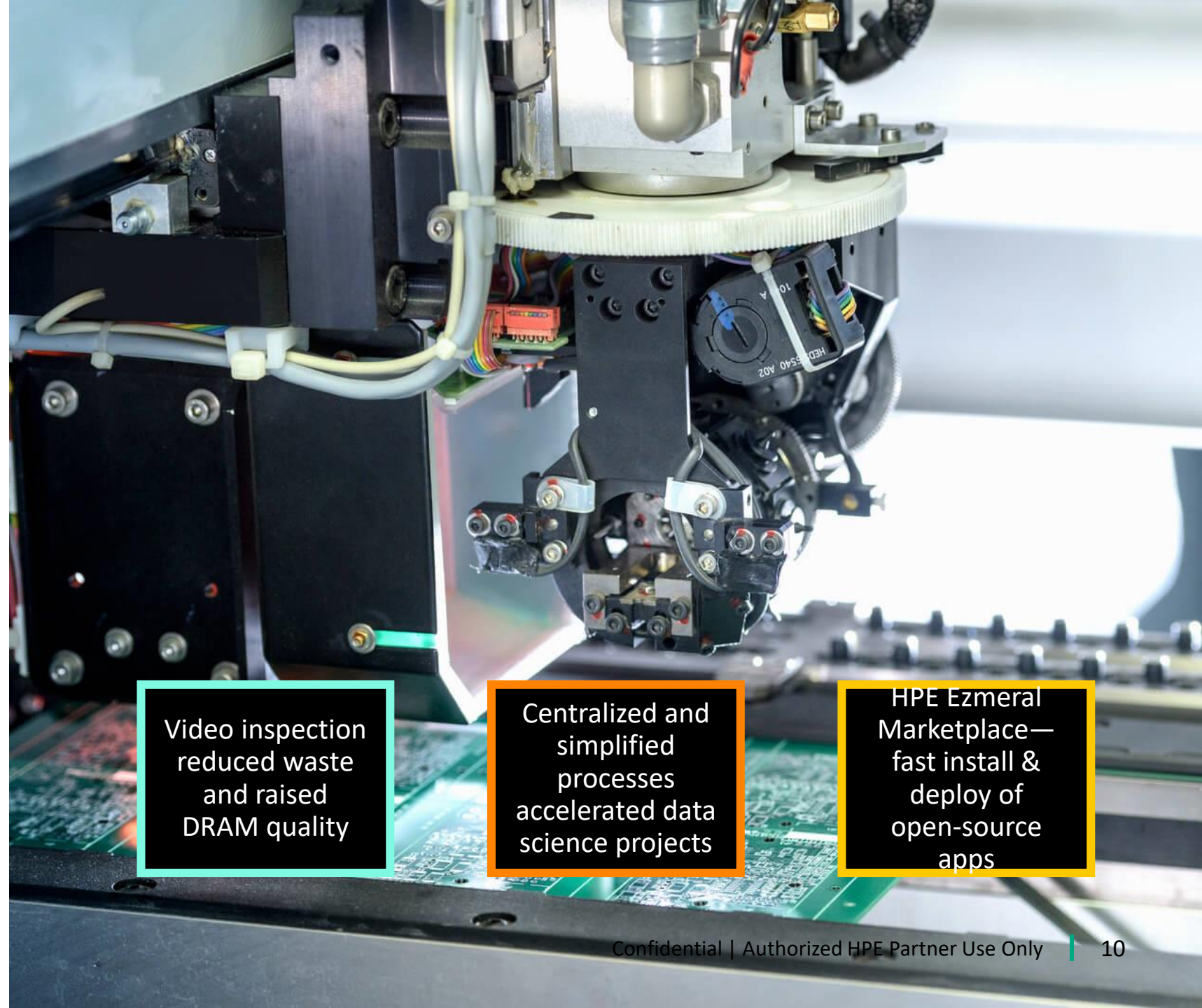
### DRAM MFG smart manufacturing

- Drive process improvements across all production steps
- Accelerated AI roll out in fabs
- GPUaaS provides resources to AI/ML training platform
- Enables IT to provides container resources for DevOps, data science and manufacturing users
- Reduced AI implementation from weeks to minutes

Video inspection  
reduced waste  
and raised  
DRAM quality

Centralized and  
simplified  
processes  
accelerated data  
science projects

HPE Ezmeral  
Marketplace—  
fast install &  
deploy of  
open-source  
apps





# 零風險的單一數據服務平台 cloud operational experience for all workloads, from edge to cloud

Today's workloads demand a new data platform that offers:

## 雲體驗 AI智能管理與維運

that is AI driven for simpler storage and data management

## 彈性擴充與 多元數據服務

eliminates silos with a flexible architecture, that serves all data types and maximizes efficiency

## 混合雲 數據保護和備援服務

seamlessly integrated, without needing point solutions





# 儲存雲管理平台 提供單一入口及各式儲存服務

Store.  
Manage.  
Protect.

Welcome to Data Services Cloud Console

備份&復原

**Backup and Recovery**

Automated protection with rapid recovery and cost efficient long term retention.

Launch

區塊儲存

**Block Storage**

Simple and easy to provision, protect, and manage block storage that meets your application needs.

Launch

VM 資源效能分析

**CloudPhysics**

Quickly analyzes your data center infrastructure to reveal cost and performance optimizations.

Launch

儲存資源服務

**Data Ops Manager**

Simplify storage management at scale with fleet-wide management and monitoring.

Launch

災難備援

**Disaster Recovery**

Continuous data protection for Disaster Recovery and data mobility.

Launch

檔案儲存

**File Storage**

File-based storage accessed through standard file serving protocols.

Launch

超融合服務

**HCI**

Global lifecycle management of HCI infrastructure and virtualization resources.

Launch

安裝和設定

**Setup Service**

Simplify new storage systems setup at scale with fleet-wide configuration.

Launch

Intuitive cloud experience on prem

Unified management across the data lifecycle

One-stop edge to cloud management

12

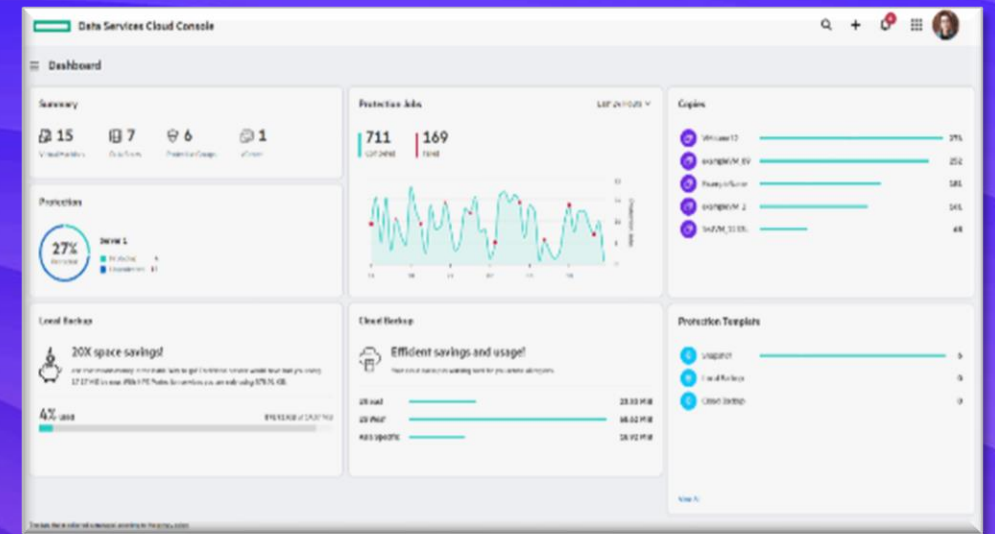


# Store. Manage. Protect.

- 資料保護4-3-2-1
- 雲地備份 / 資料備援
- 服務異地和雲端啟動服務
- 即時惡意勒索病毒加密 警示
- 數據安全方舟計畫  
Cyber Resilient Vault

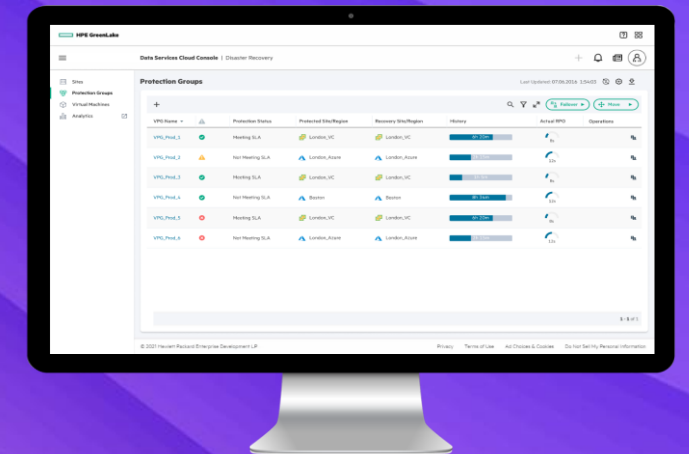
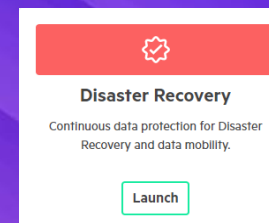
## HPE GreenLake for Backup and Recovery

Unified SaaS backup  
service for your on-prem  
and cloud workloads



## HPE GreenLake for Disaster Recovery

Unlocking the fastest  
recovery experience in one  
simple platform—with  
unlimited scale



The advantages we seek for you are the same as what we seek for ourselves

Commitment to be a net-zero enterprise across our entire value chain by

70%

reduction in our own operations by 2030

2040  
42%

reduction of the use of sold products, upstream transportation and distribution, and direct supply chain emissions by 2030

90%

reduction of our entire global footprint by 2040

<sup>1</sup>HPE Living Progress Report, 2021

<sup>2</sup>HPE Financial Services Technology Renewal Center information

<sup>3</sup>Based on HPE internal records

<sup>4</sup>2021 Living Progress Data Summary, 2022

# HPE 榮獲全球永續領導認證 道瓊永續, MSCI, S&P Global

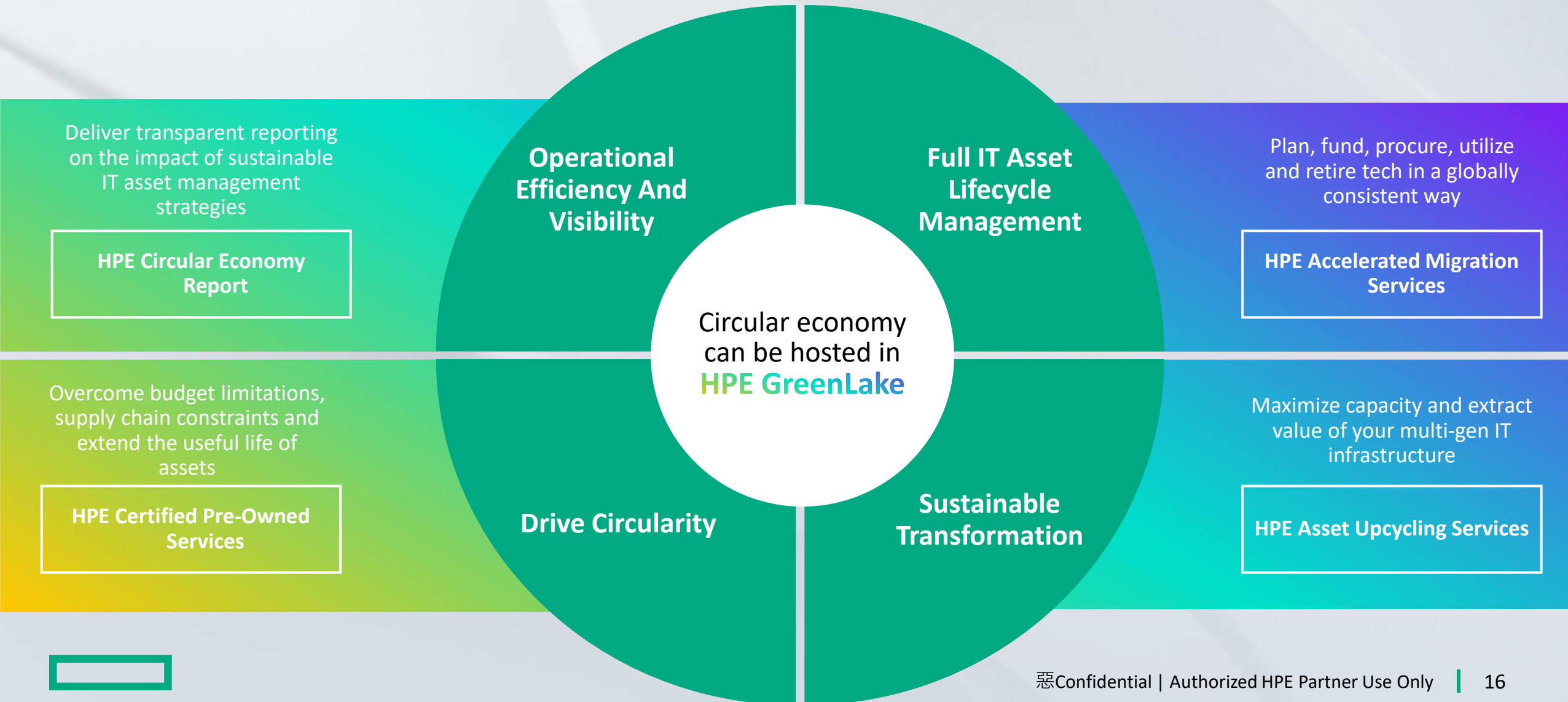
**Industry leader**  
in sustainability practices

**End-to-end**  
sustainable IT strategy

**Global expertise**  
and partner ecosystem

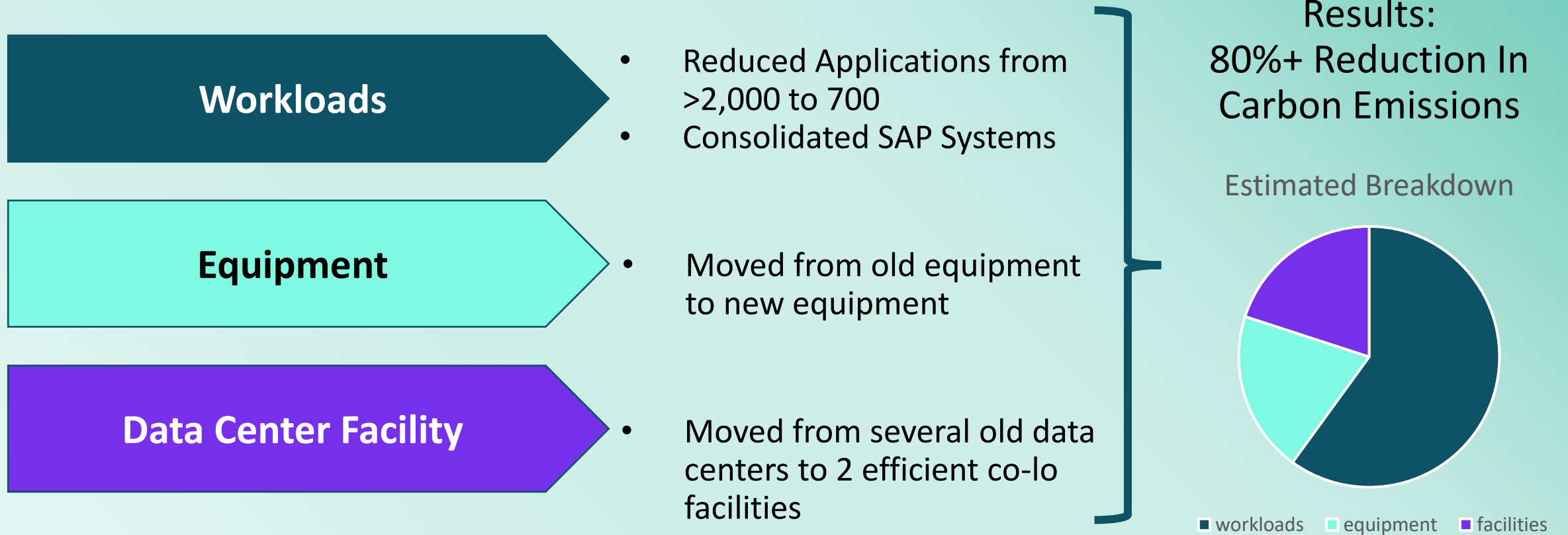


# SUSTAINABLE IT : IT 設備回收再造 循環經濟 節能省碳





# HPE benefits from its own workload-centric approach – HPE IT example<sup>1</sup>



# 創新永續儀表板

## Sustainability Dashboard via HPE GreenLake

operating  
model

Operating experience

能源電力使用



kWh

碳排放量



CO2

電力成本

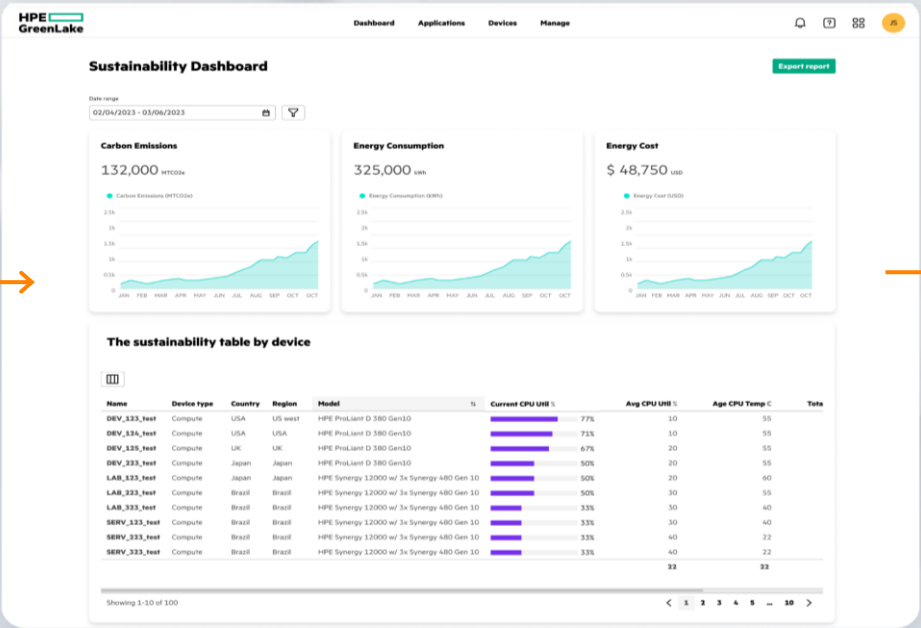


Costs



IT Assets

Usage  
Telemetry



Recommendations



Aiding carbon  
footprint reduction



Analysis

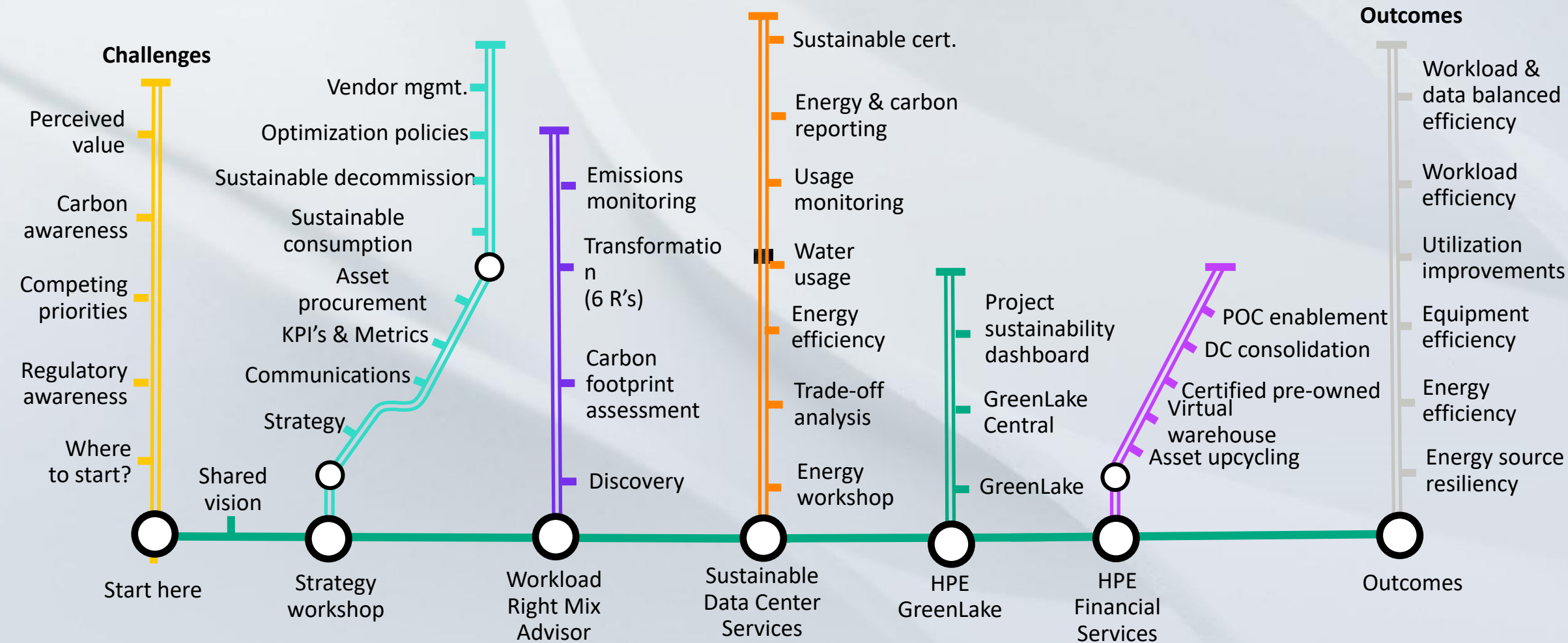


Insights



Reports

# 全方位IT永續服務



# HPE GreenLake 雲服務 協助企業達成永續和數位轉型目標

## Sustainability as a catalyst

HPE GreenLake  
edge-to-cloud platform

IT 即服務  
設備服務化 管理雲端化  
資訊服務 隨選隨用  
節能省碳 循環經濟  
IT永續服務

### Sustainable transformation

#### Holistic framework

Advisory services, design expertise and proven methods to speed your journey

### Operational efficiency and visibility

#### Sustainable innovation

Innovative solutions to reduce energy consumption, carbon footprint – and optimize utilization

### Full asset lifecycle management

#### Circular economy

Use assets longer, consolidate, upcycle assets – and free up trapped value to self-fund your transformation





# Thank you